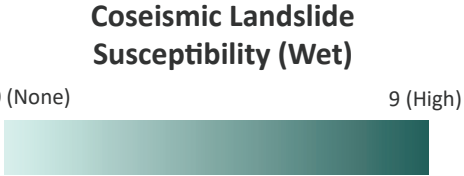
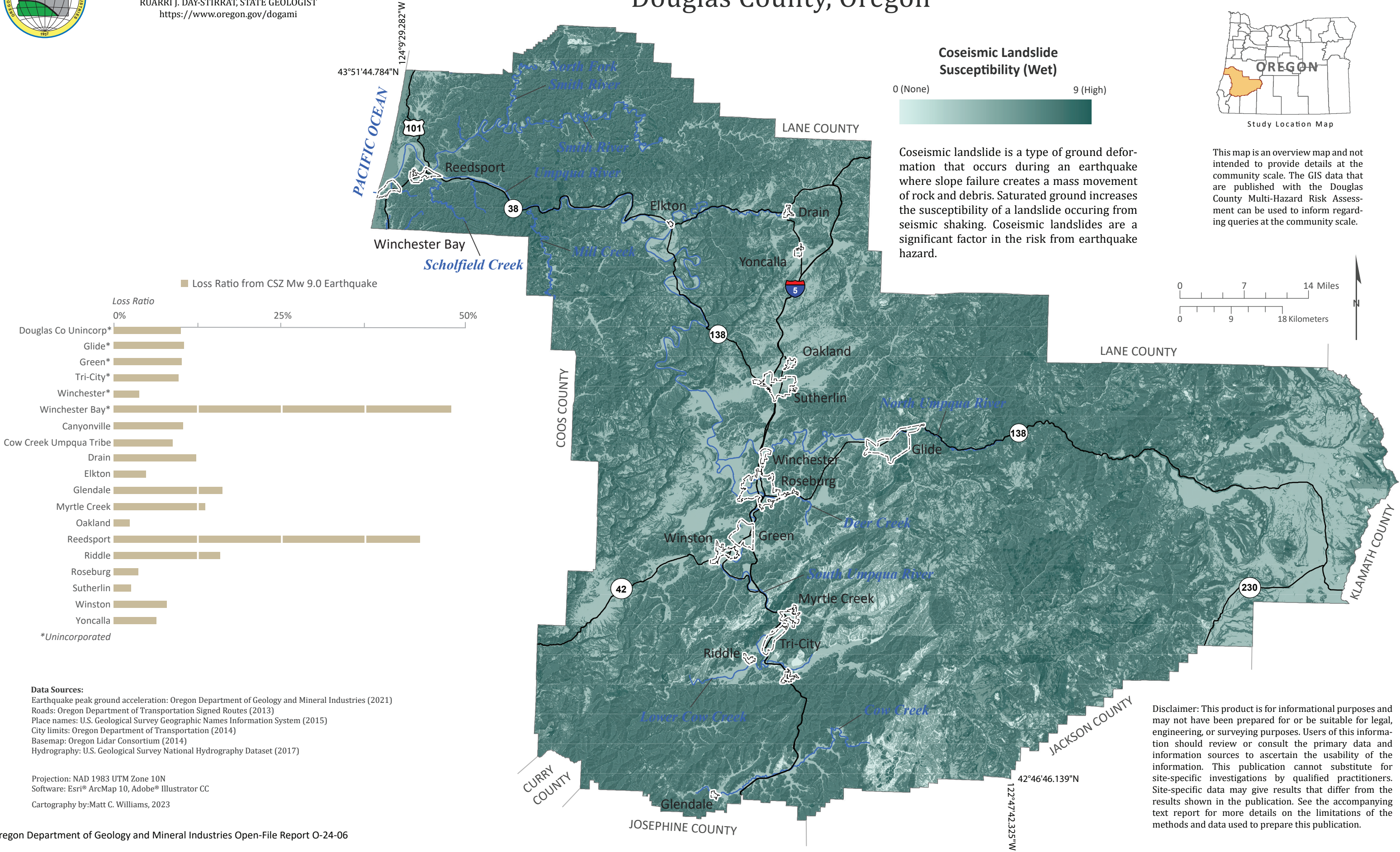


STATE OF OREGON
DEPARTMENT OF GEOLOGY AND MINERAL INDUSTRIES
RUARRI J. DAY-STIRRAT, STATE GEOLOGIST
<https://www.oregon.gov/dogami>

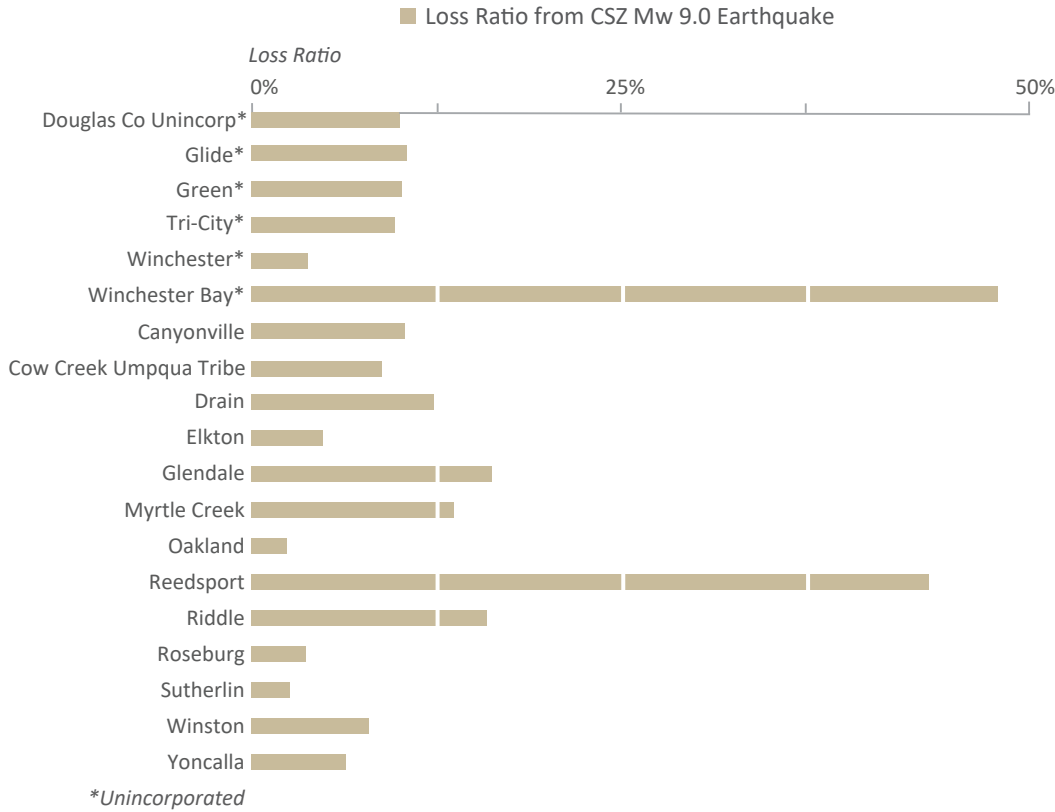
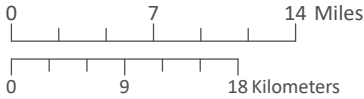
Coseismic Landslide Susceptibility (Wet) Map of Douglas County, Oregon



Coseismic landslide is a type of ground deformation that occurs during an earthquake where slope failure creates a mass movement of rock and debris. Saturated ground increases the susceptibility of a landslide occurring from seismic shaking. Coseismic landslides are a significant factor in the risk from earthquake hazard.



This map is an overview map and not intended to provide details at the community scale. The GIS data that are published with the Douglas County Multi-Hazard Risk Assessment can be used to inform regarding queries at the community scale.



Data Sources:
Earthquake peak ground acceleration: Oregon Department of Geology and Mineral Industries (2021)
Roads: Oregon Department of Transportation Signed Routes (2013)
Place names: U.S. Geological Survey Geographic Names Information System (2015)
City limits: Oregon Department of Transportation (2014)
Basemap: Oregon Lidar Consortium (2014)
Hydrography: U.S. Geological Survey National Hydrography Dataset (2017)

Projection: NAD 1983 UTM Zone 10N
Software: Esri® ArcMap 10, Adobe® Illustrator CC
Cartography by: Matt C. Williams, 2023

Disclaimer: This product is for informational purposes and may not have been prepared for or be suitable for legal, engineering, or surveying purposes. Users of this information should review or consult the primary data and information sources to ascertain the usability of the information. This publication cannot substitute for site-specific investigations by qualified practitioners. Site-specific data may give results that differ from the results shown in the publication. See the accompanying text report for more details on the limitations of the methods and data used to prepare this publication.